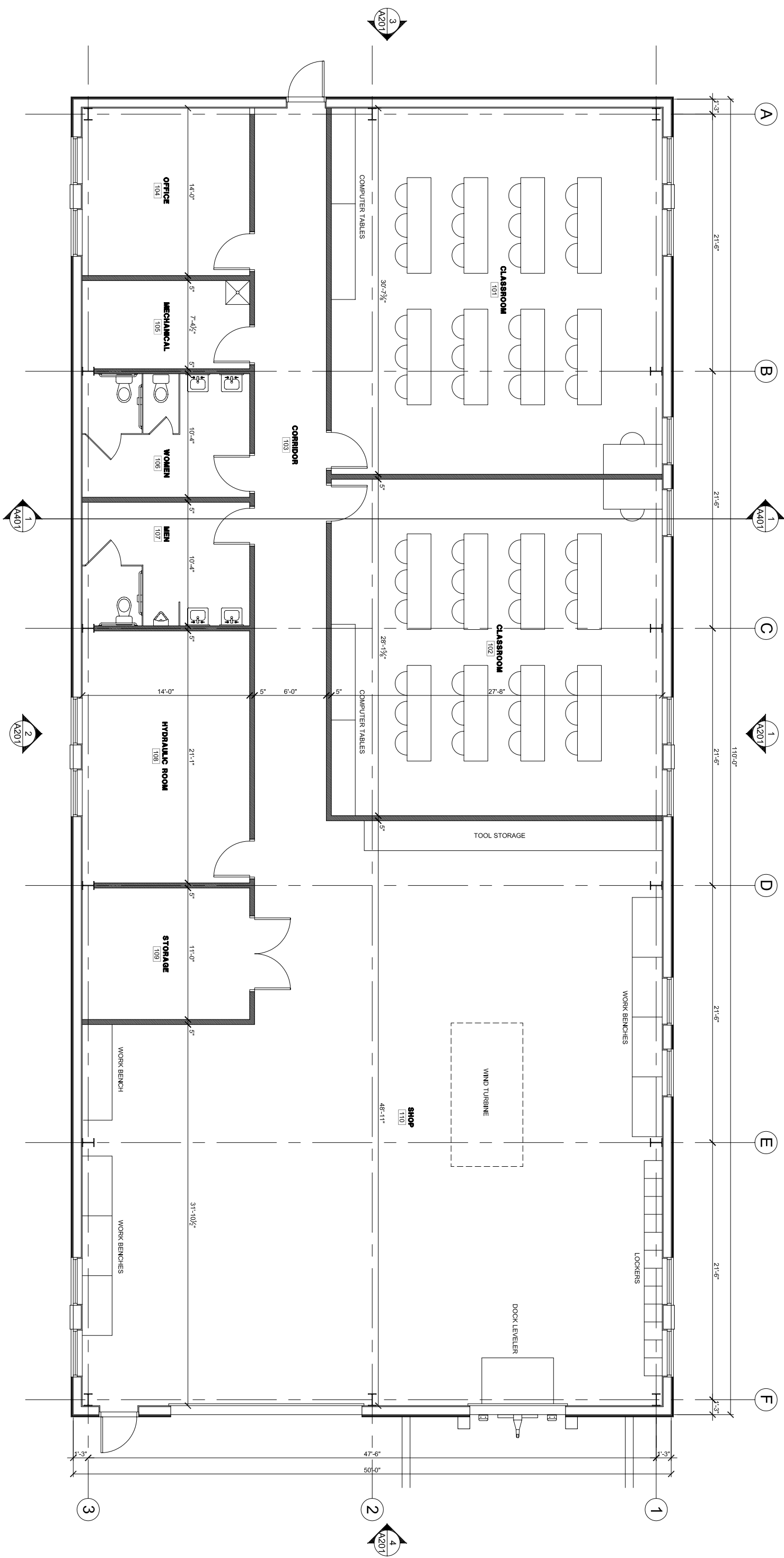


| ABBREVIATIONS |                             |
|---------------|-----------------------------|
| PT            | PAINT                       |
| GYP           | GYP/SPUM WALL BOARD         |
| EXT           | EXISTING                    |
| CMU           | CONCRETE MASONRY UNIT       |
| FB            | FACE BRICK                  |
| RB            | RUBBER BASE                 |
| CPT           | CARPET                      |
| TP            | TRACK PANEL                 |
| EPT           | EPoxy PAINT                 |
| FP            | FOLDING PARTITION           |
| PR            | PAIR                        |
| EXP           | EXPOSED                     |
| ACT           | ACQUST. CEILING TILE SYSTEM |
| CT            | CERAMIC TILE                |
| SG            | SINGLE                      |
| MLP           | METAL LINER PANEL           |
| WD            | WOOD                        |
| HM            | HOLLOW METAL                |
| SC            | SEALED CONCRETE             |

| ROOM FINISH SCHEDULE |                |       |      |        |          |         |        |         |  |
|----------------------|----------------|-------|------|--------|----------|---------|--------|---------|--|
| ROOM                 | ROOM           | FLOOR | BASE | WALLS  |          | CEILING |        | REMARKS |  |
| NO.                  | NAME           |       |      | NORTH  | SOUTH    | EAST    | WEST   |         |  |
| 101                  | CLASSROOM      | SC    | RB   | MLP    | GYP/PT   | GYP/PT  | MLP    | ACT     |  |
| 102                  | CLASSROOM      | SC    | RB   | MLP    | GYP/PT   | GYP/PT  | MLP    | ACT     |  |
| 103                  | CORRIDOR       | SC    | RB   | GYP/PT | GYP/PT   | GYP/PT  | MLP    | ACT     |  |
| 104                  | OFFICE         | SC    | RB   | GYP/PT | MLP      | GYP/PT  | MLP    | ACT     |  |
| 105                  | MECHANICAL     | SC    | RB   | GYP/PT | MLP      | GYP/PT  | MLP    | ACT     |  |
| 106                  | WOMEN          | SC    | RB   | GYP/PT | MLP      | GYP/PT  | GYP/PT | ACT     |  |
| 107                  | MEN            | SC    | RB   | GYP/PT | MLP      | GYP/PT  | GYP/PT | ACT     |  |
| 108                  | HYDRAULIC ROOM | SC    | RB   | GYP/PT | MLP      | GYP/PT  | GYP/PT | EXPOSED |  |
| 109                  | STORAGE        | SC    | RB   | GYP/PT | MLP      | GYP/PT  | GYP/PT | EXPOSED |  |
| 110                  | SHOP           | SC    | RB   | MLP    | GYP/TMLP | MLP     | GYP/PT | EXPOSED |  |



**1 FLOOR PLAN**  
SCALE: 1/4"=1'-0"

**RICHARD L. JOHNSON ASSOCIATES, INC.**  
Professional Engineer  
No. 07-1158  
State of Illinois  
1100 W. WASHINGTON ST., SUITE 200  
ROCKFORD, ILLINOIS 61108  
TEL: 815/398-1231  
FAX: 815/398-1232  
WWW.RLJA.COM

**FLOOR PLAN AND ROOM FINISH SCHEDULE**  
A101 OF 2  
Date: DECEMBER 5, 2007

| Revisions |        |
|-----------|--------|
| date      | remark |
|           |        |
|           |        |
|           |        |

**RICHARD L. JOHNSON ASSOCIATES, INC.** *architect interior designer*  
4703 CHARLES STREET ROCKFORD, ILLINOIS 61108 815/398-1231

**NEW BUILDING 'E' AT  
HIGHLAND COMMUNITY COLLEGE  
FREEPORT, ILLINOIS**